

Lumi Wall Sconce  
UL Supplementary  
Installation Instructions





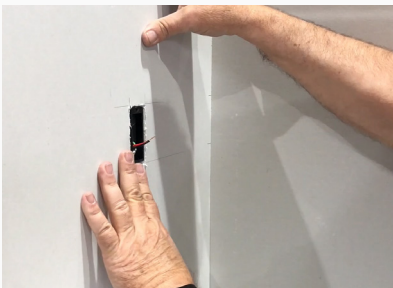
1. Mount a 4.0 or 3.5 (square or octagon) Junction Box flush to a wood or metal stud



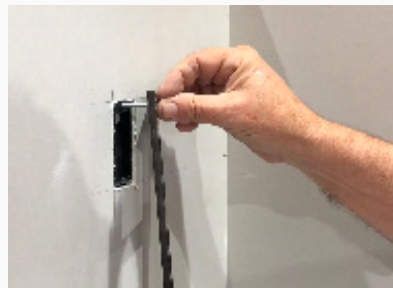
2. Pull 90C wire (Hot, Neutral, Ground) to the Junction Box with a 6" loop



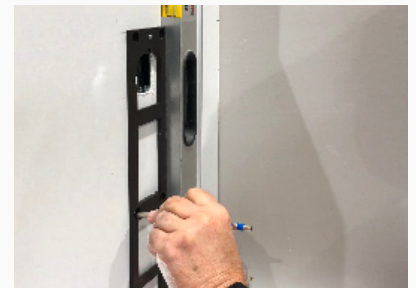
3. Attach the Mounting Plate to the Junction Box, center hole on top



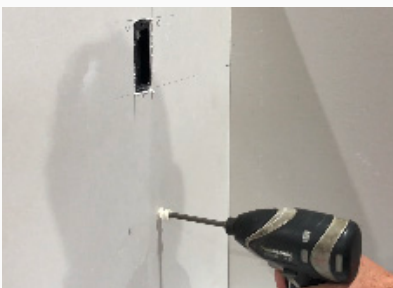
4. Cut drywall to fit tight around the Mounting Plate



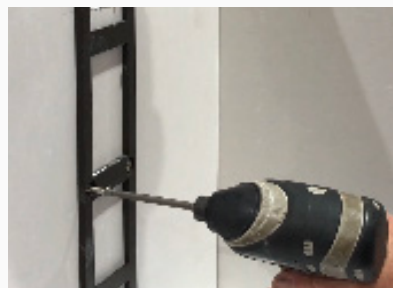
5. Fix Back Plate with 6/32 machine screw through the center hole, into the center hole in the Mounting plate



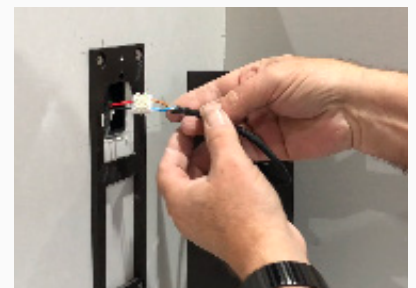
6. Level the Back Plate and mark the fixing points



7. Remove the Back Plate and drill holes using plastic anchors as required



8. Attach the Back Plate with 6/32 flat head machine screws (provided) to the Mounting Plate (top) and the plastic anchors (bottom)



9. Pull the circuit wires through the Mounting Plate and connect to wires from fixture, push the wire and wire connectors into the Junction Box



10. Attach the fixture to the Back Plate by sliding the guides (top and bottom) over the Back Plate nest secure with grub screw



11. Attach the shade and install light globe